

Model No.

PBPOFFCLAMPPR+ PBPPLATE

Clamps + Plate Brackets

Borders panels are attached using clamps and plate brackets. They fit both the 24" and 36" high panels.

Features

PBPOFFCLAMPPR

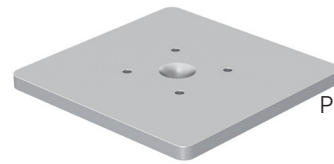
- Borders post clamp mount - silver
- Sold as a pair (one left, one right)
- Mounts to the bottom of a Borders post, then clamps to the overhang of a desk top

PBPPLATE

- Borders post plate mount - silver
- Sold individually
- Mounts to the bottom of a Borders post, then sits on the desk top
- Has double sided tape to adhere to the desk top – no drilling required



PBPOFFCLAMPPR



PBPPLATE

